

Q-Stock --- Sample Screenshots

These screenshots are from the basic installation with Sage 50 Interface; there are other modules which can be added to the basic system (i.e. Quotations, Contracts, Batch/Serial Number Tracking and Rentals) which are not included in this document.

1. System Logon Screen



2. Main System Menu Screen



3. File Maintenance Menu Options



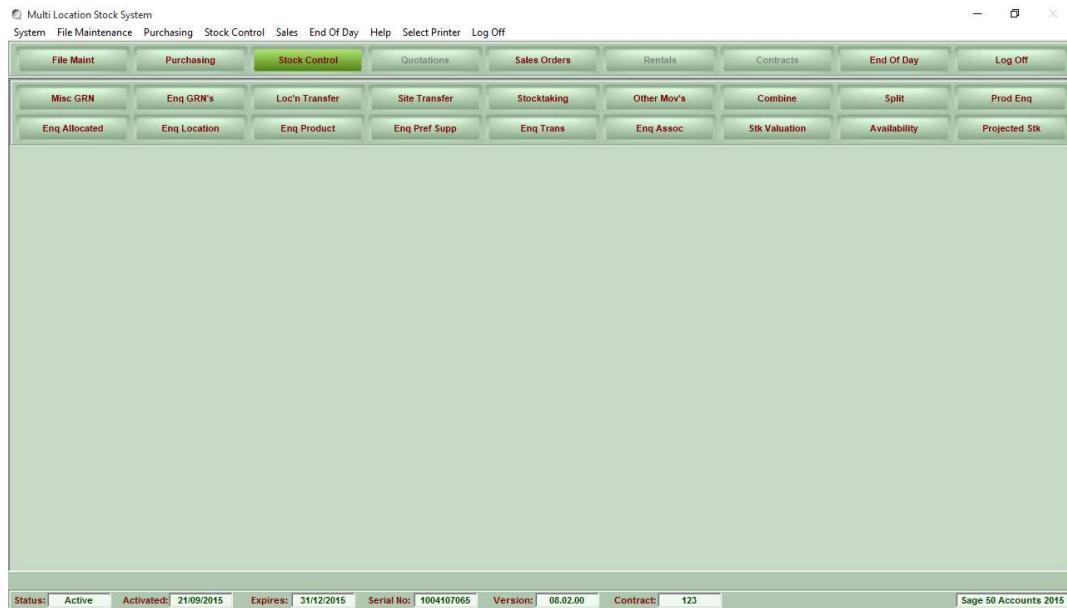
Option	Description
Assoc Prods	Associated Products Maintenance
Components	Components Maintenance
Customers	Customers Maintenance
Delivery Addr	Delivery Addresses Maintenance
Departments	Departments Maintenance
Manufacturers	Manufacturers Maintenance
Pref Supp	Preferred Suppliers Maintenance
Price Lists	Price Lists Maintenance
Products	Products Maintenance
Sites	Sites Maintenance
Stock Loc	Stock Locations Maintenance
Suppliers	Suppliers Maintenance

4. Purchasing Menu Options



Option	Description
PO Maint	Purchase Order Maintenance
PO Receipt	Purchase Order Receipt
Enq PO	Purchase Order Enquiry
Enq History	Purchase History Enquiry
Purchase Inv	Purchase Invoice Entry

5. Stock Control Options



Option	Description
Misc GRN	Miscellaneous GRN Entry
Enq GRN's	GRN Enquiry
Loc'n Transfer	Location Transfers Entry
Site Transfer	Site Transfers Entry
Stocktaking	Enter Stocktaking Results
Other Mov's	Other Stock Movements Entry
Combine	Combine Components
Split	Split Components
Prod Enq	Product Enquiry
Enq Alloc	Allocated Stock Enquiry
Enq Location	Stock Enquiry By Location
Enq Product	Stock Enquiry By Product
Enq Pref Supp	Stock Enquiry By Preferred Supplier
Enq Trans	Stock Movement Transactions Enquiry
Enq Assoc	Associated Stock Enquiry
Availability	Stock Availability Report
Projected Stk	Projected Stock Position Report

6. Sales Order Options



Option	Description
SO Maint	Sales Order Maintenance
Pro Forma	Generate a ProForma Invoice
SO Despatch	Sales Order Despatch
Picking Notes	Print Picking Notes
Confirm Deliv	Confirmation Of Delivery
SO PoS	Point Of Sales Order Entry
SO Return	Sales Order Returns Entry
Enq Sales	Sales Order Enquiry
Enq Invoice	Sales Invoice Enquiry
Sales Analysis	Sales Analysis Report (by Customer)

7. Products Maintenance (showing extra information used by Q-Stock)

Products Maintenance

System File Maintenance Purchasing Stock Control Sales End Of Day Help Select Printer Log Off

File Maint Purchasing Stock Control Quotations Sales Orders Rentals Contracts End Of Day Log Off

Product Code: BOARD001

Product Description: Whiteboard - Drywipe (900 x 1200)

* Additional Description:

* Tracking Type: None

* (Qty) Decimals: 0

Category: Presentation Supplies

* Manufacturer: System Setup Default

Item Type: Stock * Stock Type: Not Applicable

Latest Unit (Landed) Cost Price: 15.00 Unit Selling Price: 20.00 * Unit Volume: 0

Reorder Level: 1 Reorder Quantity: 2

Override Nominal Code - Sales: 4000 Sales North

Override Nominal Code - Purchases: 5000 Materials Purchased

Department: Sales

* Can Selling Price Be Discounted?: Yes

* Associated URL:

* Barcode(s):

* Obsolete Product?: No

* Unit Rental Price: 0.00 * Rental Life in Cycles: 0

* Contract Type (if applicable): None

Update Barcodes

Note that any changes you make here will NOT be reflected in Sage 50 Accounts 2015

Go Back Update Delete Continue

Products

Status: Active Activated: 21/09/2015 Expires: 31/12/2015 Serial No: 1004107065 Version: 06.02.00 Contract: 123 Sage 50 Accounts 2015

8. Sites Maintenance

Sites Maintenance

System File Maintenance Purchasing Stock Control Sales End Of Day Help Select Printer Log Off

File Maint Purchasing Stock Control Quotations Sales Orders Rentals Contracts End Of Day Log Off

Code	Site Description	Obsolete
1	Q-tron Warehouse	
2	Warehouse 2	

(Click a Site to select for update/deletion)

Go Back Update Delete

Sites

Status: Active Activated: 21/09/2015 Expires: 31/12/2015 Serial No: 1004107065 Version: 06.02.00 Contract: 123 Sage 50 Accounts 2015

Code: 1 Site Description: Q-tron Warehouse

Name & Address:

Q-tron

The Ross Wing

Redhill Court

Doncaster

DN11 9ED

Tel (1): 01302 311066

Tel (2):

Email:

Contact: John

Obsolete: This Site currently has stock recorded in it so you cannot make it obsolete

9. Locations (within a Site) Maintenance

[illegible]

10. Purchase Order Maintenance (Order Header)

Purchase Order Maintenance

System

File Maintenance

Purchasing

Stock Control

Sales

End Of Day

Help

Select Printer

Log Off

File Maint

Purchasing

Stock Control

Quotations

Sales Orders

Rentals

Contracts

End Of Day

Log Off

Supplier Code

CON001

Supplier Name & Address

Q

Customer Address

Q

Site Address

Concept Stationery Supplies

66 New Street

Ridgeway

Newcastle upon Tyne

NE1 4GF

Delivery Name & Address

Order Date

21/09/2015

Date Required

21/09/2015

Our Contact

Supplier Contact

External Order Ref

Default VAT Rate

Standard rate

Currency

Pound Sterling

Due Date

Confirmation No.

Special Instructions

Go Back

Continue

PO Maint

Status:

Active

Activated:

21/09/2015

Expires:

31/12/2015

Serial No:

1004107065

Version:

08.02.00

Contract:

123

Sage 50 Accounts 2015

Q-Stock Sample Screenshots

Page 8

Q-Stock Sample Screenshots

Purchase Order Receipt

System

File Maintenance

Purchasing

Stock Control

Sales

End Of Day

Help

Select Printer

Log Off

File Maint

Purchasing

Stock Control

Quotations

Sales Orders

Rentals

Contracts

End Of Day

Log Off

Order Details

Line Number

001

Product

BOOKS001

A4 Ledger Book - 5 Column

Supplier Part No.

C10009

Quantity - Ordered

12

Unit Cost

4.50

Received

0

Special Instructions

Cancelled

0

Outstanding

12

Receipt Details

Product

BOOKS001

A4 Ledger Book - 5 Column

Unit Cost

4.50

FOC ?

Pound Sterling

VAT

Standard rate

Quantity Received

6

Cancel Balance Of Order?

Supplier Part No.

C10009

Comments

Site

Q-tron Warehouse

Location

DEFAULT - Default Location

Nominal Code

5000 Materials Purchased [Supplier]

Landed Cost

Latest

4.50

Goods

4.50

Uplift %

0.00

Landed

4.50

Revert

Go Back

Update

PO Receipt

Status:

Active

Activated:

21/09/2015

Expires:

31/12/2015

Serial No:

1004107065

Version:

08.02.00

Contract:

123

Sage 50 Accounts 2015

13. Purchase Order Enquiry

[illegible]

14. Stock Enquiry By Location – Stock Valuation View

Stock Enquiry By Stock Location

System

File Maintenance

Purchasing

Stock Control

Sales

End Of Day

Help

Select Printer

Log Off

File Maint

Purchasing

Stock Control

Quotations

Sales Orders

Rentals

Contracts

End Of Day

Log Off

Site

Q tron Warehouse

☒ Exclude if qty on hand is zero

Location

WAREHOUSE - Warehouse

Stock Valuation

Product Code	Product Description	Free
BOARD001	Whiteboard - Drywipe (900 x 1200)	5
BOOKS001	A4 Ledger Book - 5 Column	73
BOOKS003	Shorthand Notebook - 80 Sheets	64
CALC004	Calculator - Printing Rolls	152
COR001	Correction Fluid - White	61
DISK001	Diskettes - Formatted (1.44MB)	36
DISK002	Disk - CDR (640MB)	6
ENV002	Envelope - White (110 x 220) Window	49
ENV003	Envelope - Brown (110 x 220) Plain	52
ENV004	Envelope - Brown (110 x 220) Window	32
FLIP001	Flip Chart - A1 Pad	21
LABELS001	A4 Labels (68x99) - Inkjet	3

Location Stock Valuation

	Total Quantity	Total Cost	Total Value
Free	1861	5,498.09	8,423.53
Allocated	0	0.00	0.00
Total	1861	5,498.09	8,423.53

Print

Close

Enq Location

Status	Active	Activated	Expires	Serial No	Version	Contract	Sale
		21/09/2015	31/12/2015	100410Z065	08.02.00	123	Sale 50 Accounts 2015

15. Stock Enquiry By Location – Stock Record Detail View

Stock Enquiry By Stock Location

System File Maintenance Purchasing Stock Control Sales End Of Day Help Select Printer Log Off

File Maint Purchasing Stock Control Quotations Sales Orders Rentals Contracts End Of Day Log Off

Site: Q-tron Warehouse ☒ Exclude if qty on hand is zero

Location: WAREHOUSE - Warehouse

Stock Valuation

Product Code	Product Description	Free
BOARD001	Whiteboard - Drywipe (900 x 1200)	5
BOOKS001	A4 Ledger Book - 5 Column	73
BOOKS003	Shorthand Notebook - 80 Sheets	64
CALC004	Calculator - Printing Rolls	152
COR001	Correction Fluid - White	61
DISK001	Diskettes - Formatted (1.44MB)	36
DISK002	Disk - CDR (640MB)	6
ENV002	Envelope - White (110 x 220) Window	49
ENV003	Envelope - Brown (110 x 220) Plain	52
ENV004	Envelope - Brown (110 x 220) Window	32
FLIP001	Flip Chart - A1 Pad	21
LABELS001	A4 Labels (68x99) - Inkjet	3

Site: Q-tron Warehouse

Product: Whiteboard - Drywipe (900 x 1200)

Location: Warehouse

Date Received: 03/02/2015 On Hand: 5

Unit Cost: 15.00 Unit Price: 20.00 Allocated: 0

Comments: Initial Setup

Movements

Print Close

Enq Location

Status: Active Activated: 21/09/2015 Expires: 31/12/2015 Serial No: 1004107065 Version: 06.02.00 Contract: 123 Sage 50 Accounts 2015

16. Stock Enquiry By Location – Movements View

Stock Enquiry By Stock Location

System File Maintenance Purchasing Stock Control Sales End Of Day Help Select Printer Log Off

File Maint Purchasing Stock Control Quotations Sales Orders Rentals Contracts End Of Day Log Off

Site: Q-tron Warehouse ☒ Exclude if qty on hand is zero

Location: WAREHOUSE - Warehouse

Stock Valuation

Product Code	Product Description	Free
BOARD001	Whiteboard - Drywipe (900 x 1200)	5
BOOKS001	A4 Ledger Book - 5 Column	73
BOOKS003	Shorthand Notebook - 80 Sheets	64
CALC004	Calculator - Printing Rolls	152
COR001	Correction Fluid - White	61
DISK001	Diskettes - Formatted (1.44MB)	36
DISK002	Disk - CDR (640MB)	6
ENV002	Envelope - White (110 x 220) Window	49
ENV003	Envelope - Brown (110 x 220) Plain	52
ENV004	Envelope - Brown (110 x 220) Window	32
FLIP001	Flip Chart - A1 Pad	21
LABELS001	A4 Labels (68x99) - Inkjet	3

Stock Movement Transactions (5)

Date	Reference	Type	Qty	Comments	Input Date	Input By
03/02/2015	System Setup	AI	5	Initial Setup	03/02/2015 @ 13:52:27	Q-tron Support Logon

Go Back Close

Enq Location

Status: Active Activated: 21/09/2015 Expires: 31/12/2015 Serial No: 1004107065 Version: 06.02.00 Contract: 123 Sage 50 Accounts 2015

Q-Stock Sample Screenshots

Page 11

Q-Stock Sample Screenshots

[illegible]

19. Location Transfer

Transfer Stock To Another Location

System File Maintenance Purchasing Stock Control Sales End Of Day Help Select Printer Log Off

File Maint Purchasing Stock Control Quotations Sales Orders Rentals Contracts End Of Day Log Off

Site: Q-tron Warehouse

Product Code: BOARD001

Whiteboard - Drywipe (900 x 1200)

From Location: WAREHOUSE - Warehouse

On Hand	Allocated	Available
3	0	3

Date: 21/09/2015

Reference: TEST1

Quantity: 2

Comments:

To Location: WORKSHOP - Workshop

Go Back Update

Lock Transfer

Status: Active Activated: 21/09/2015 Expires: 31/12/2015 Serial No: 1004107065 Version: 06.02.00 Contract: 123 Sage 50 Accounts 2015

20. Stock Enquiries By Product Showing Results Of Transfer

Stock Enquiry By Product

System File Maintenance Purchasing Stock Control Sales End Of Day Help Select Printer Log Off

File Maint Purchasing Stock Control Quotations Sales Orders Rentals Contracts End Of Day Log Off

Site: ** All Sites **

Product: BOARD001

Whiteboard - Drywipe (900 x 1200)

Exclude if qty on hand is zero

Stock Valuation

Site Description	Location Description	Free
Q-tron Warehouse	Warehouse	1
Q-tron Warehouse	Workshop	2
Warehouse 2	Default Stock Location	2

Stock Movement Transactions (1)

Date	Reference	Type	Qty	Comments	Input Date	Input By
03/02/2015	System Setup	AI	5	Initial Setup	03/02/2015 @ 13:52:27	Q-tron Support Logon
21/09/2015	TEST1	MO	-2	** Xfr to Warehouse 2	21/09/2015 @ 11:44:51	John Walker
21/09/2015	TEST1	MO	-2	*** Transfer to WORKSHOP	21/09/2015 @ 11:46:10	John Walker

Go Back Close

Enq Product

Status: Active Activated: 21/09/2015 Expires: 31/12/2015 Serial No: 1004107065 Version: 06.02.00 Contract: 123 Sage 50 Accounts 2015

Stock Enquiry By Product

System File Maintenance Purchasing Stock Control Sales End Of Day Help Select Printer Log Off

File Maint Purchasing Stock Control Quotations Sales Orders Rentals Contracts End Of Day Log Off

Site: ** All Sites ** ☒ Exclude if qty on hand is zero

Product: BOARD001 Whiteboard - Drywipe (900 x 1200)

Site Description	Location Description	Free
Q-tron Warehouse	Warehouse	1
Q-tron Warehouse	Workshop	2
Warehouse 2	Default Stock Location	2

Stock Movement Transactions (2)

Date	Reference	Type	Qty	Comments	Input Date	Input By
21/09/2015	TEST1	MI	2	** Transfer from WAREHOUSE - Warehouse	21/09/2015 @ 11:44:51	John Walker

Go Back Close

Enq Product

Status: Active Activated: 21/09/2015 Expires: 31/12/2015 Serial No: 1004107065 Version: 08.02.00 Contract: 123 Sage 50 Accounts 2015

21. Sales Order Maintenance – Header

Sales Order Maintenance

System File Maintenance Purchasing Stock Control Sales End Of Day Help Select Printer Log Off

File Maint Purchasing Stock Control Quotations Sales Orders Rentals Contracts End Of Day Log Off

Customer Code: FGL001

Order Date: 21/09/2015 Date Received: 21/09/2015 Date Entered: 21/09/2015 Date Required: 21/09/2015

Customer Name & Address

F G Landscape & Design
189 Kings Street
Norwich
Norfolk
NR7 8GI

Delivery Name & Address: 000 189 Kings Street

F G Landscape & Design
189 Kings Street
Norwich
Norfolk
NR7 8GI

Special Instructions

Order Number: New S/O

Customer Order No:

Contact Name:

External Order Ref:

☐ Use Default Department: Default

Default VAT Rate: Standard rate

Customer Discount: 0.00 %

Additional Discount: Invoice Value

Price List Code: TRADEB

Go Back Continue Value Discounts

SO Maint

Status: Active Activated: 21/09/2015 Expires: 31/12/2015 Serial No: 1004107065 Version: 08.02.00 Contract: 123 Sage 50 Accounts 2015

22. Sales Order Maintenance – Details


Sales Order Maintenance

System File Maintenance Purchasing Stock Control Sales End Of Day Help Select Printer Log Off

File Maint Purchasing Stock Control Quotations Sales Orders Rentals Contracts End Of Day Log Off

(Double-click an order line to select for update or drag and drop in the bin to delete)

Seq	Type	Product Code	Description Line 1	Ordered	Alloc/Pick	Despatched	Outstanding
002	S/H		Wipeboards				
004	P	BOARD001	Whiteboard - Drywipe (900 x 1200)	1	0	0	1
006	P	BOARD002	Whiteboard - Drywipe (1000 x 1500)	1	0	0	1
008	S/T		Wipeboards Total				
010	S/H		Envelopes				
012	P	ENV001	Envelope - White (110 x 220) Plain	12	0	0	12
014	P	ENV002	Envelope - White (110 x 220) Window	12	0	0	12
016	P	ENV003	Envelope - Brown (110 x 220) Plain	12	0	0	12
018	S/T		Envelopes Total				

Sequence 016 

Line Type

Product Code ENV003

Description Line 1 Envelope - Brown (110 x 220) Plain

Description Line 2

Order Quantity 12 Department Sales

VAT Rate Standard rate

Nominal Code 4001 Sales South [Customer]

SO Maint

Status: Active Activated: 21/09/2015 Expires: 31/12/2015 Serial No: 1004107065 Version: 06.02.00 Contract: 123 Sage 50 Accounts 2015

23. Sales Order Maintenance – Summary

Sales Order Maintenance

System File Maintenance Purchasing Stock Control Sales End Of Day Help Select Printer Log Off

File Maint Purchasing Stock Control Quotations Sales Orders Rentals Contracts End Of Day Log Off

Header Items

A discount of 5.00% is applicable on orders with a value over £100.00

Line	Product Description	Pick/Disp	Unit Price	C/P	Base Price	Unit Disc	Unit Net	Override	Qty	Total
1	Wipeboards									
2	Whiteboard - Drywipe (900 x 1200)	0	20.00	P	18.00	0.90	17.10	0.00	1	17.10
3	Whiteboard - Drywipe (1000 x 1500)	0	22.00	P	19.80	0.99	18.81	0.00	1	18.81
4	Wipeboards Total									35.91
5	Envelopes									
6	Envelope - White (110 x 220) Plain	0	8.99	P	8.09	0.40	7.69	0.00	12	92.28
7	Envelope - White (110 x 220) Window	0	9.50	P	8.55	0.43	8.12	0.00	12	97.44
8	Envelope - Brown (110 x 220) Plain	0	7.50	P	6.75	0.34	6.41	0.00	12	76.92
9	Envelopes Total									266.64

(Click a product line if you wish to display / override the price details)

Total Goods 318.48

Total Discount 15.93

Total Net Value 302.55

Total VAT Value 60.51

Total Order Value 363.06

All values shown in Pound Sterling

☐ Print Order after update

SO Maint

Status: Active Activated: 21/09/2015 Expires: 31/12/2015 Serial No: 1004107065 Version: 06.02.00 Contract: 123 Sage 50 Accounts 2015

24. Sales Order Despatch (Shows all locations where the product is currently available)

Sales Order Despatches

System File Maintenance Purchasing Stock Control Sales End Of Day Help Select Printer Log Off

File Maint Purchasing Stock Control Quotations Sales Orders Rentals Contracts End Of Day Log Off

Goods allocated for despatch (Double-click to Pick or Allocate Only)

Site Description	Location Description	Qty	To Pick?	Batch / Serial No	Unit Price
Q-tron Warehouse	Warehouse	1	Yes		

Product: BOARD001 - Whiteboard - Drywipe (900 x 1200) O/S: 1
Unit Price: 17.10 Selected: 1

Free Stock (Click to select for despatch)

Site Description	Location Description	Free	Alloc	Batch / Serial No	Expires	A/S
Q-tron Warehouse	Warehouse	0	1			
Q-tron Warehouse	Workshop	2	0			
Warehouse 2	Default Stock Location	2	0			

Drop Items in here to remove

Go Back Continue

SO Despatch

Status: Active Activated: 21/09/2015 Expires: 31/12/2015 Serial No: 1004107065 Version: 06.02.00 Contract: 123 Sage 50 Accounts 2015